

Welcome Pack

Secondary Plus

Build English
skills. Build
friendships.
Learn
together.

Your child's course

The health and safety of our students and teachers is important to us.

A reminder that in the event the situation changes, and we are instructed to suspend face-to-face classes in line with government guidelines, we will immediately move online.

Please click on the links below to access the parent and student guides.

Online classes : Please click here to access the parent and student guide.

Face to face classes: Please click here to access the parent and student guide.

Secondary Plus is a modern and innovative English course unique to the British Council. The course content has been created by a team of experienced British Council teachers who know and understand the needs and wants of our teenage students.

Our courses are designed to build students' confidence in developing listening, speaking, reading and writing skills so that they become better communicators. Students will improve their speaking skills through a variety of activities, including delivering presentations and through various project based activities. The course is delivered in an exciting magazine style format which students get access to at the beginning of each module.

Secondary Plus is more than an English language course, it consists of five key components:



Project based



Apply language skills whilst working on real-world projects



Core life skills development



Develop critical thinking, collaboration, leadership and problem-solving skills



Independent learning



Learn to express opinions openly and think independently



Language skills development



Real-world learning



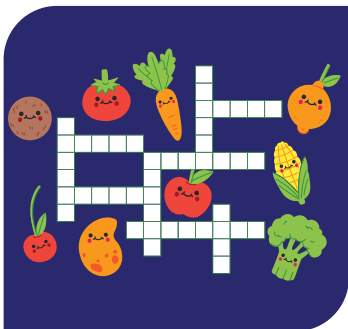
During each module, the Each module focuses on student works on a subjects that are relevant variety of speaking, to teenagers and cover listening, reading and real-world topics that writing exercises to learn affect people on a global new language.scale.

To further enhance the learning experience for our Young Learners, our online and face to face classes are limited to small groups. This gives us the opportunity to spend more time with each student and maximise teacher and student interaction.

Free activities

In addition to your child's course, we have optional fun activities exclusively for our Young Learners.

Speaking activities and presentations
Quizzes and games



Special days/events



We will send
regular
updates during
each term.

Safeguarding

British Council takes everyone's safety and wellbeing very seriously. We have a Safeguarding Policy describing the measures that we are making to keep all the children and adults safe. Everyone coming into our contact has the right to be protected from harm and abuse. Your child's safety is very important to us hence to keep your child safe while they learn online or in our classrooms, we are working with our global safeguarding team to put safeguarding measures in place.

Safeguarding is everybody's responsibility so that please support us by reading through our code of conduct and parent guide. For further details on our safeguarding policy, [click here](#)



Our inclusion policy

Every child is important to us and we want them to feel comfortable and welcome in our classes. Please [click here](#) to view our inclusion policy on how we make our centres welcoming and easy to use for as many people as possible, especially people who are disabled or have special educational needs.



Raising concerns

Please tell us if you see or experience behaviour or actions

at the British Council which you feel:

- affect the safety of children or vulnerable adults**
- may be fraudulent**
- are harassment.**

The British Council is working with Safecall to provide an independent and confidential way to report your concerns.

Safecall will take reports in confidence and you may remain anonymous if you wish.

**Report online at
www.safecall.co.uk/report**

Please note that it is mandatory that you have your parent card when picking up your child from the British Council.

Photo images on the phone will not be accepted as valid proof.

Our Customer Service team will be happy to help you with any further assistance you may need.

If you need any additional support, contact us on

T: +94 (0)70 7521 521

Monday to Saturday 9.00 a.m. to 5.00 p.m.

E: info.lk@britishcouncil.org

 [@BritishCouncilSriLanka](https://www.facebook.com/BritishCouncilSriLanka)