



# Partner Schools Global Network

**SCHOOLS NOW! CONFERENCE**  
**28 February - 1 March,**  
**Colombo, Sri Lanka**

**Life Beyond School**

***Developing Learners as Social Entrepreneurs;  
and Schools as Global Enterprises***



# Did you Know? What is PSGN

## Partner Schools Global Network

- GLOBAL COMPETITION CALLED 'MY WORLD'
- THEME FOR THIS YEAR IS 'HOPE'
- BRITISH COUNCIL PROMOTES EQUALITY, DIVERISTY AND INCLUSION
- PSGN NETWORK HAS 1300 SCHOOLS AND PRESENCE OVER 25 COUNTRIES
- THIS IS THE 2<sup>ND</sup> GLOBAL PSGN SCHOOLS NOW CONFERENCE

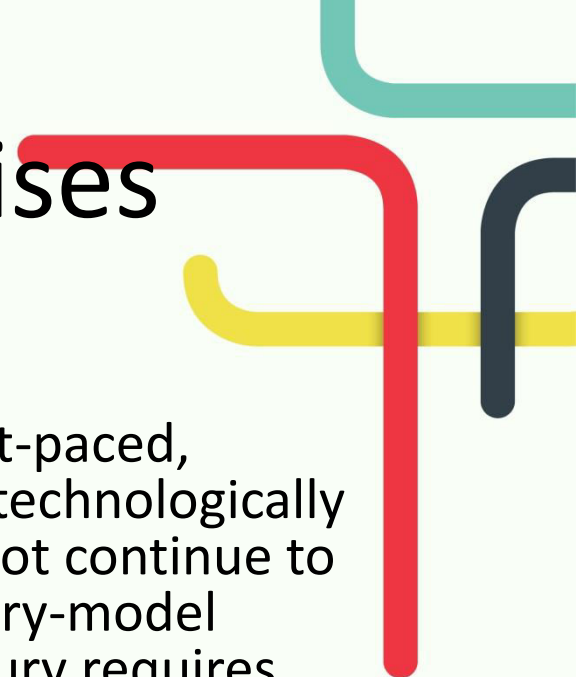
# Flashback? Need Analysis...

## Schools as global enterprises; learners as social entrepreneurs

- Young people do not understand what has driven entrepreneurship in the world. They look at **Steve Jobs** who quit college [to pursue his dream]. But others are very well educated and academically achieved. The problem among the youth today is that they have more people, who want to wait in line for an iPad at Apple Store; than to design one.
- Not providing opportunities for social entrepreneurship, community service, social action, digital literacy, citizenship, critical thinking, collaboration, communications, showcasing, creativity, imagination, student leadership, mentoring, counselling, coaching, budding, networking and training to our learners to be able to work and live in an international environment; is like leaving them **illiterate** in the 21<sup>st</sup> century. **Learn – Unlearn - Relearn**



# Schools as Global Enterprises



- Today's students live in a world that is extremely fast-paced, constantly changing, increasingly culturally diverse, technologically driven, and media-saturated. I believe that we cannot continue to deliver a 20th century, scientific-management, factory-model education. This changing paradigm of the 21st century requires that we redefine the term "**education**", "**school**", "**curriculum**", "**teacher**" and the "**learner**". The challenge for 21<sup>st</sup> century education is to create an approach that is agile, adaptable and in tune with young people '**millennials**' lives; outside the classroom.
- The answer lies in "**promoting schools as global enterprises**" – connecting our students & schools to the world of collaboration, global reach, social media outreach, innovation, creativity, community, service, opportunity, discovery, diversity, networks and entrepreneurship; **but the question is what kind of innovation and collaboration and how it can be successfully implemented?**

# Students as social entrepreneurs



My **today's interactive showcase will show how schools in the world** are developing learners as social entrepreneurs and schools as global enterprises thus giving our learners and wider community opportunities to become entrepreneurial citizens of the future:

- Learn from community, business and government as well as from one another
- Take part in volunteering projects which have an impact on their communities
- Engage in international partnership activities thus bridging global divide
- Create sustainable local initiatives promoting beyond the classroom learning activities and social action projects
- Develop an awareness of and address global issues, SDGs with impact on their environment, community and society
- Promote and secure global study opportunities through understanding framework for scholarship, access, equity, achievement and excellence

# Life Beyond School Today

## *Life Beyond School – Developing Learners as Social Entrepreneurs; and Schools as Global Enterprises*

We believe in upbringing learners as young Social Entrepreneurs; and Schools as Global Enterprises by 21st century teaching practices and engaging learners at various **'Social Action Plan'** for instilling thus sensitizing the young learners into **solving complex social problems and aiming to achieve global growth, peace, and prosperity.**

It is important to develop entrepreneurial skills earlier in life in today's learners. Early entrepreneurship education has shown to boost the students' sense of self and improve academic performance.





# ENGLISH LANGUAGE LTD



WORK!  
WORK!  
AND WORK!



PUNCTUALITY

DISCIPLINE

STUDY

LISTEN

SPEAK HELLO

EXAMS



YES SIR!

YES, SIR!

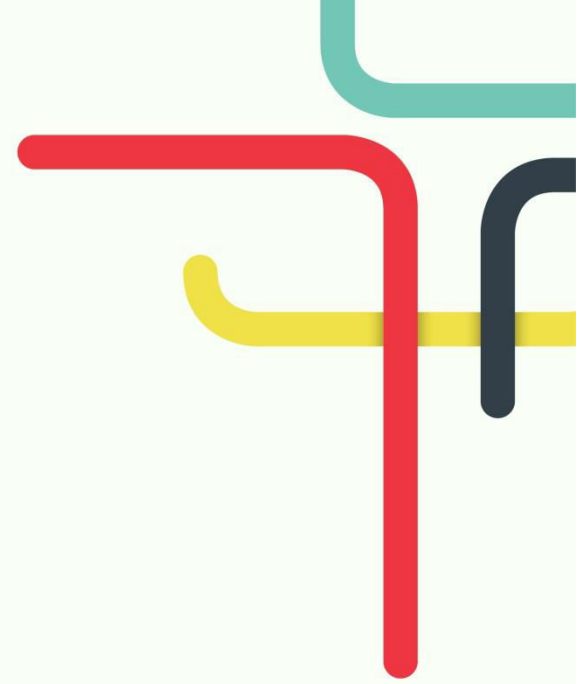
YES, SIR!

SEGURO QUE EN LA CLASE DE INGLÉS LO PASAMOS GUAY!

HOY ES EL PRIMER DIA I QUE EMOCIONANTE!



**World has moved from..**



**Globalization  
to Millennialization**

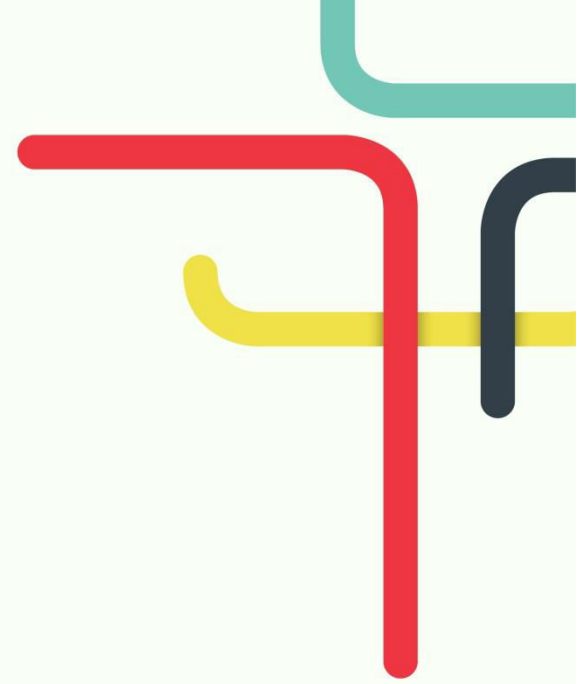


**World is not just..**



**‘Happening’ anymore;  
its ‘Appening’ now....**

**World has moved from..**

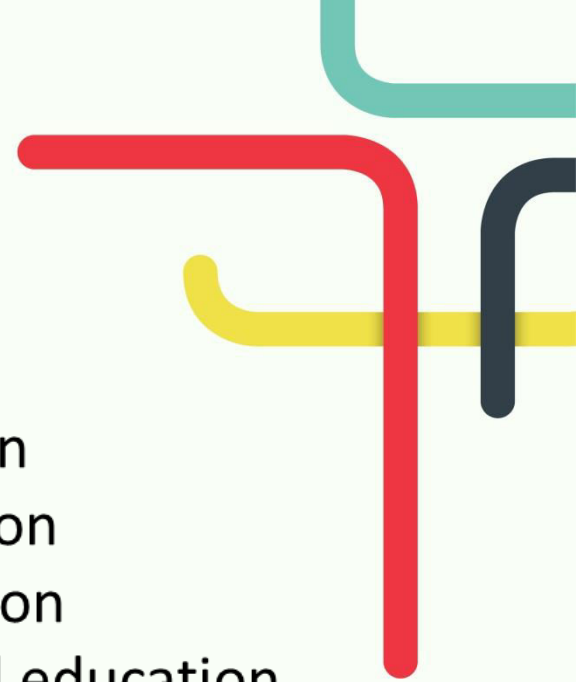


**Sympathy  
to Empathy**

# Confused on Vocabulary...

## Life beyond Schools Jazz?

- Volunteerism
- Community Service
- Society education
- Community education
- Empathy in education
- Sustainable education
- Social action
- Citizenship
- Patriotism/Nationalism
- Values education
- Active Citizens
- GloCAL Citizenship
- Skills education
- Talent education
- Needs education
- Environmental education
- Entrepreneurship education
- SDG 2030 Education
- CAS Creativity, Activity & Service
- Technology & Community
- WE Service Learning for AP schools



# Thoughts & Actions

*You are today where your thoughts  
have brought you*

*You will be tomorrow where your  
thoughts take you*

***James Allen***



# Present Education Scenario



- There is supposedly more **‘Education’** now, but there is also more Corruption
  - more Greed
  - more populism
  - more Selfishness
  - more Poverty
  - Lack of Sincerity and Integrity
- Why ?

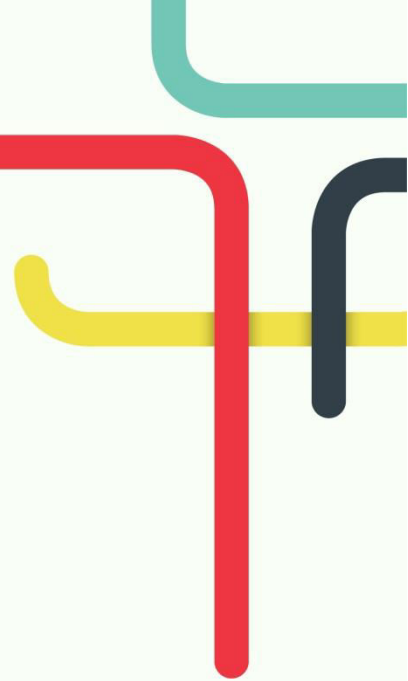


# Because, now Education is -

- Synonymous with
  - a) Examination
  - b) Employment
  - c) Empowerment

Unfortunately it no more stands for

- a) Emancipation
- b) Ennoblement
- c) Evolution
- d) Empathy



# Education Today

- Non existence of joint family or Happy Family has adversely affected the present education scenario.
- Absence of a holistic approach and an imbalanced growth of knowledge ---- dealing only with the external world around us and not related to the inner-self of an individual.
- Misdirected educational system ---- instead of developing a person as a humane human being it is only directed towards superficial, surface level achievements.
- Designed purely for **money-making and not for man-making** and only promotes negative qualities like jealousy, hatred and rivalry instead of virtues like kindness, compassion and honesty



Then, what exactly is the  
true meaning of  
**“EDUCATION**

### **Does Education**

Make one wiser? Happier? Contented?

Make one a better human being?





**Or is there something more to Education?**

**Yes of course, education is not just this.**

**Then what is REAL education?**

**What should be its role?**

# What is Education today?



Is not mere stuffing of facts.

Education is for the actualization of the potential already in children.

Education is really the process of removing the ignorance that is covering our inner knowledge, which is absolute, which is perfect, which is eternal, which is supreme.

Education is for a Holistic LIFE and not for a mere living.

‘Education’ needs to be enriched with

**SERVICE LEARNING**



# What is Service Learning

- Service learning is an academic pedagogy and is distinct from volunteering or participating in community service. While service learning does involve performing service, it is based on a structured academic foundation, programmes and curriculum.
- Students who participate in service learning framework apply their academic learning to real-life settings and situations by being active in meaningful community-based service. In addition, they work on problems that make academic learning relevant while enhancing their leadership and social skills, analytic ability, and civic responsibility.
- By incorporating hands-on service-learning projects into pedagogy; schools, governments, classrooms, curriculum and community today shall promote more global social entrepreneurs and agents of communal change.



# Service Learning - SL

Now, to understand the concept of

Service Learning Based Education

Let's first see what "SL" really mean.



# What are Service Learning Values?

*Standards or Principles considered  
important in life*

SL Values

Coming from  
within

·  
?

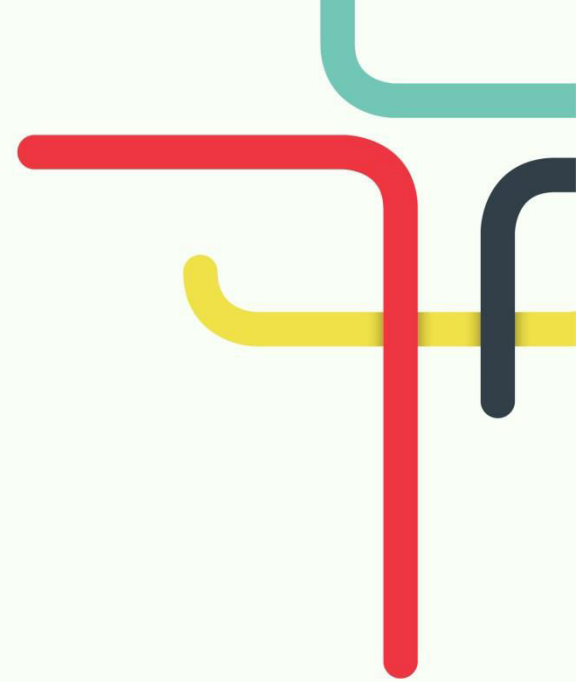
Being  
Practiced

·  
?



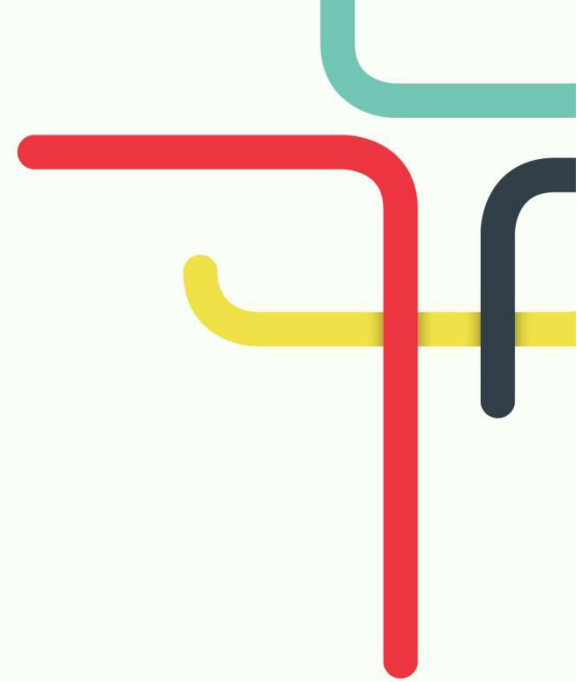
# Values From Within

1. Love
2. Kindness
3. Compassion
4. Mercy
5. Sympathy
6. Empathy



# Values to be Practiced

1. Punctuality
2. Discipline
3. Obedience
4. Behavior
5. Conduct
6. Character





# Why SL Values?

- Values bring quality and meaning to life
- Values give a person his identity and character
- Values act as guidelines ---- they tell him what he should and should not do.

They make us realize that  
WHAT WE ARE  
Is more important than  
What We Have



# Education in Values or Value

## Education Helps in Developing

- *Character*
- *Good conduct*
- *Moral integrity*
- *Empathy*
- *Citizenship*
- *Humanity*
- *Self discipline*
- *Compassion*
- *Love for all living beings*
- *Responsibility*

And many other positive qualities in the learners

*And above all . . . .*

It makes them feel better about themselves!



**And . . . . as time goes on,**

It becomes a second nature to them to be disciplined, punctual etc.

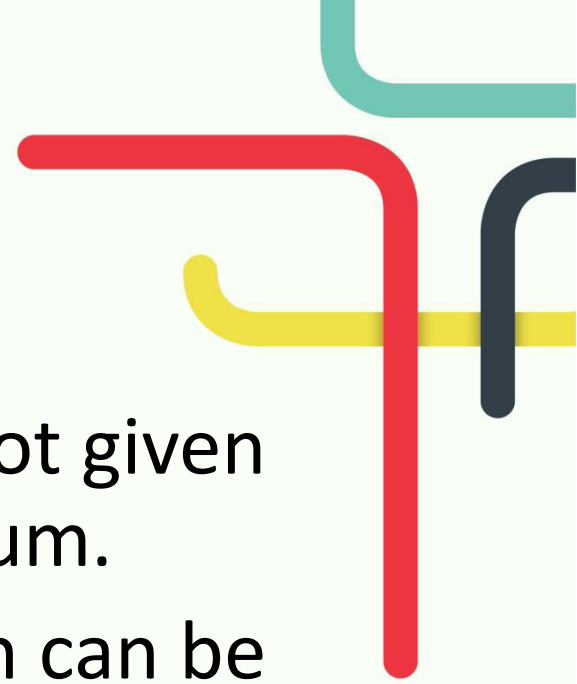
Their academic performance goes **up**.

And they are able to spend more time on learning.



# Role of Service Learning Education

- In spite of all this, SL education is not given enough prominence in the curriculum.
- Is it because it is not a course which can be tested and/or graded?
- Is it because the result of the teaching cannot be seen immediately?
- Or is it because we think students will learn the values somehow or the other and it is not our responsibility?



# Whose responsibility is it anyway?



Isn't imparting SL the responsibility of parents?

Yes, it is.

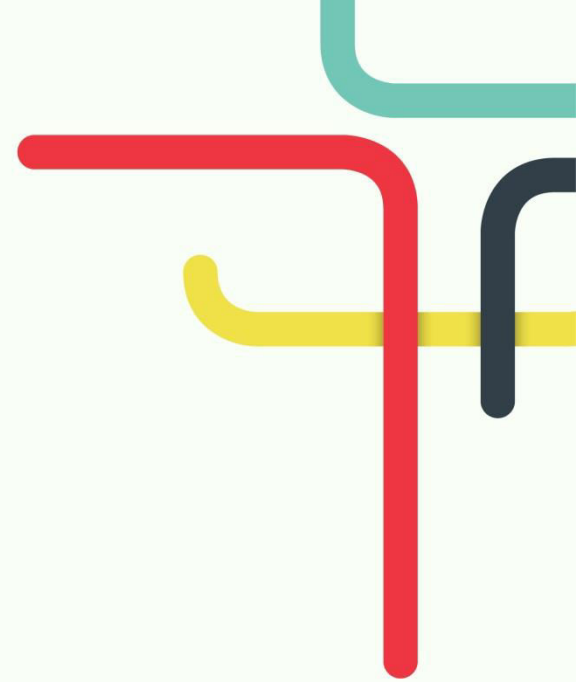
But teachers and schools play a **BIG** role too.

- Students spend more time in the campus/schools
- Campus forms the bridge between home and the society.
- It is in schools and later in the colleges that students learn how to behave in the society.
- It is in schools and colleges that a good value system can be nurtured.

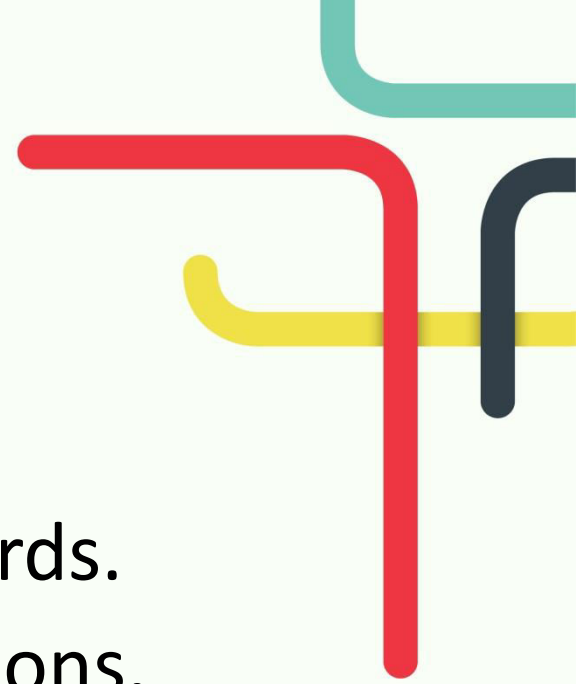
# Catch Them Young

parents,  
teachers,  
family,  
school,  
environment,  
friends,  
society,  
religion ----

**all these wield a great influence on the child.**



# Thoughts and Destiny



Watch your:

Thoughts : they become Words.

Words : they become Actions.

Actions : they become Habits.

Habits : they become Character.

Character : it becomes your Destiny.

-Frank Outlaw

# Leadership is 'action' not a 'position'

**Redesigning learning** – developing a 21<sup>st</sup> century pedagogy with particular emphasis on formative assessment, student leadership, competence-based curriculum and creativity.

**Redesigning schooling** – a focus on merging of phases, flexible age cohorts, design of buildings, curriculum, flexible time schedules, smaller units within schools and academic / pastoral divide

**Redesigning leadership** – exploring how to lead schools effectively in the 21<sup>st</sup> century, including governance, executive headship, teacher as leaders, succession planning and distributing leadership





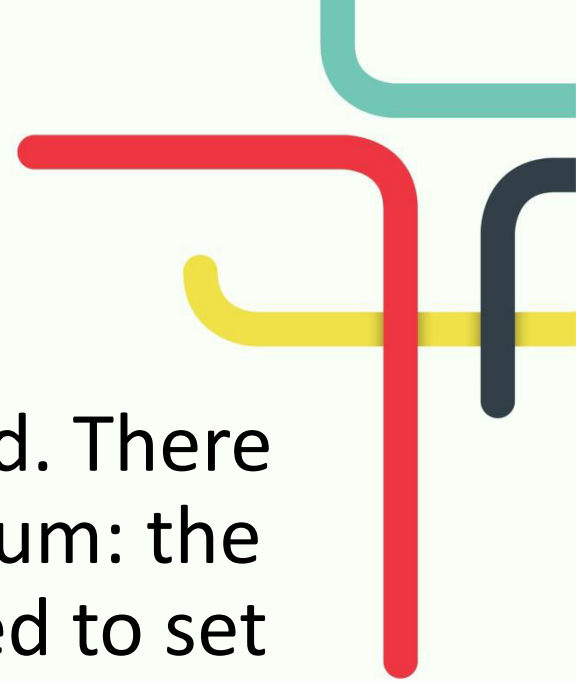
# NEED FOR CARE

**‘The structures of current schooling work against care, and, at the same time, the need for care is perhaps greater than ever.’**



# The Curriculum Pride

- The curriculum should be treasured. There should be real pride in our curriculum: the learning that the nation has decided to set before its young. Teachers, parents, employers, the media and the public should all see the curriculum as something to embrace, support and celebrate. Most of all, young people should relish the opportunity for discovery and achievement that the curriculum offers.



**Move from 'push' to 'pull'**

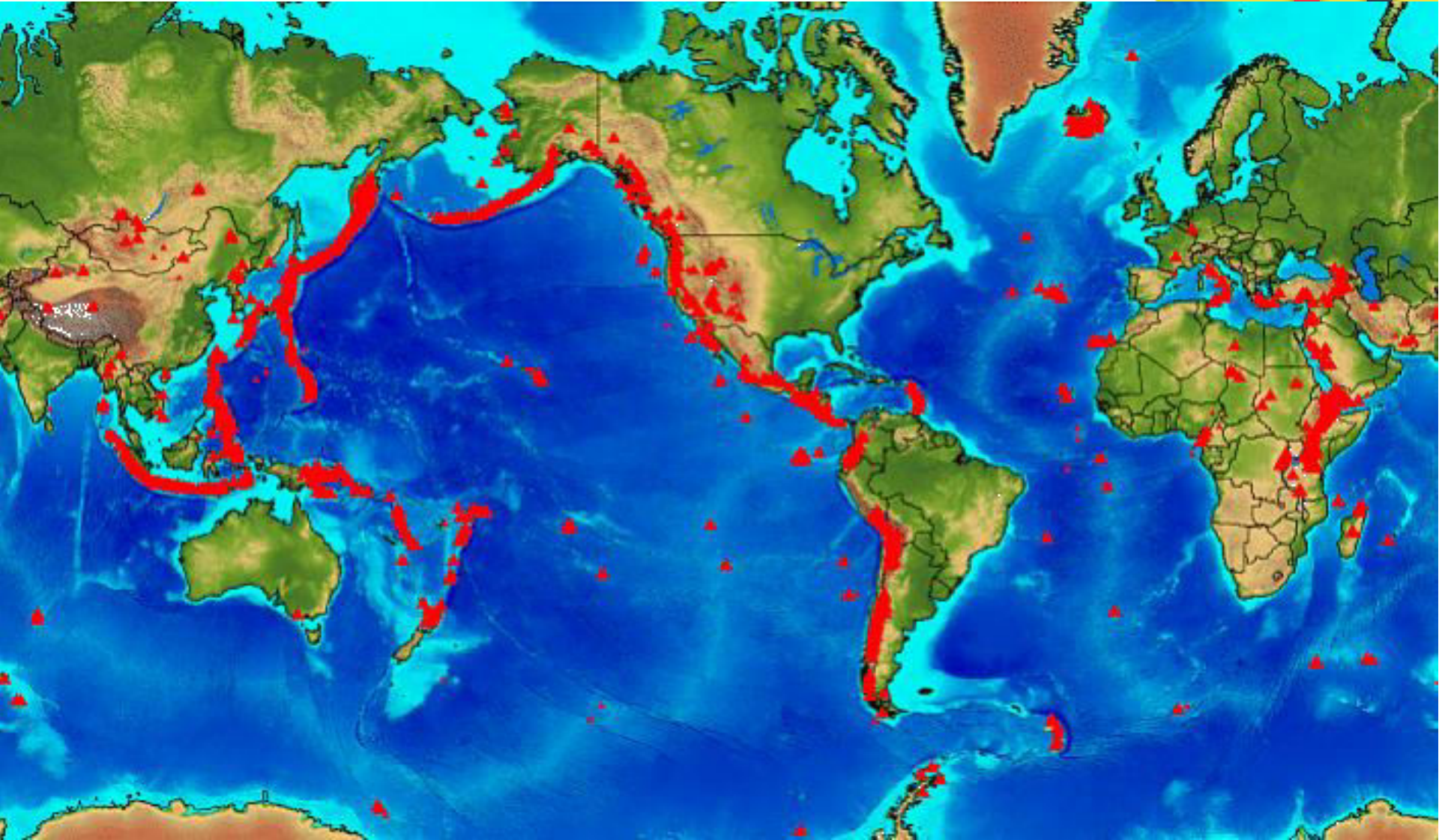
**teaching is all about 'pull'**

**– your students want to follow you.**

Inspire them, influence them & take Off  
for a better world; where sky is the  
Limit.....Be the Captain not just the Principal



# Entrepreneurs & Enterprises



# Thank you & Cheer for me Please!

Name: Chaudhry Faisal Mushtaq TI

Designation: CEO – Chief Energy Officer

Nickname: Sir Red Bull

Organization: Roots Millennium Schools, Pakistan

[Email: Faisal.Mushtaq@rootsschools.edu.pk](mailto:Faisal.Mushtaq@rootsschools.edu.pk)

Whats App: +92 321 5165050

Twitter: @faisalmushtaq18

